



# Software Manual

# **Net Configuration Tool**

**Rev. 1.01**

**■ Table of Contents**

**1. Manual Information.....3**

**2. Operating System (OS) Environment.....3**

**3. Software Installation & Uninstallation .....4**

    3-1 Installation.....4

    3-2 Uninstallation .....6

**4. Configuration Tool .....8**

    4-1 Configuration Tool.....8

        4-1-1 Ethernet Configuration.....8

        4-1-2 WLAN Configuration.....13

    4-2 Web Server.....18

## **1. Manual Information**

This Net Configuration Tool Manual provides information on the utility program used to set printer operation conditions.

## **2. Operating System (OS) Environment**

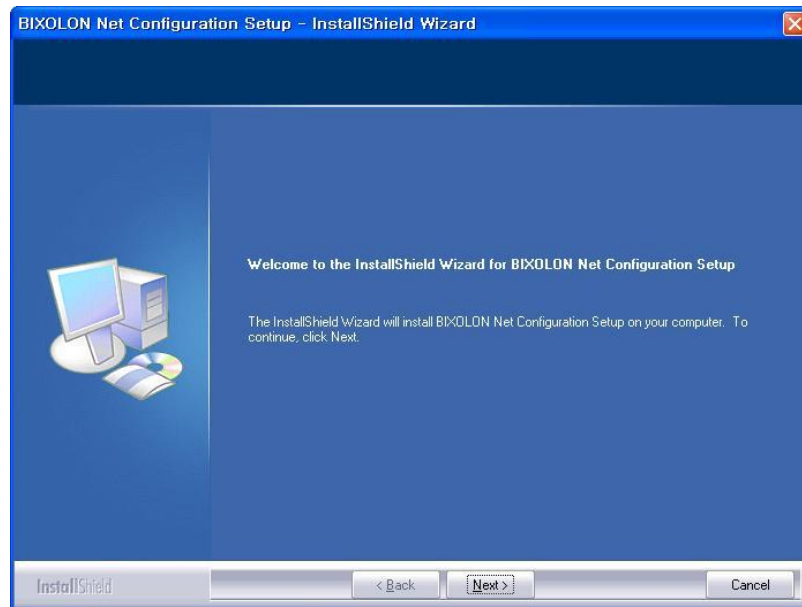
The following operating systems are supported for usage.

- Microsoft Windows 2000 (32bit)
- Microsoft Windows XP (32bit/64bit)
- Microsoft Windows Server 2003 (32bit/64bit)
- Microsoft Windows Vista (32bit/64bit)
- Microsoft Windows Server 2008 (32bit/64bit)
- Microsoft Windows Server 2008R2 (64bit)
- Microsoft Windows 7 (32bit/64bit)
- Microsoft Windows 8 (32bit/64bit)
- Microsoft Windows 2012 (64bit)

## 3. Software Installation & Uninstallation

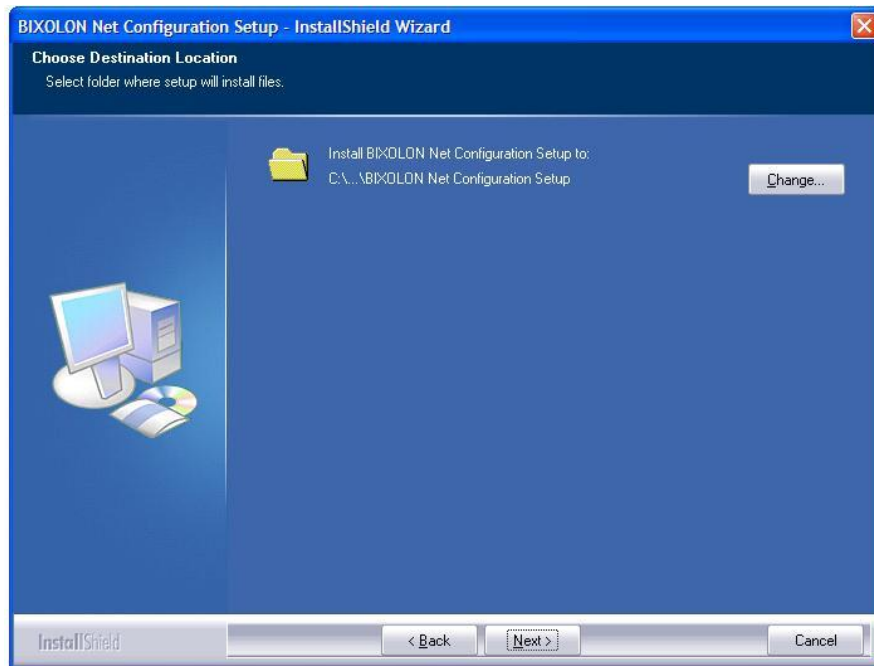
### 3-1 Installation

- 1) Execute the “Net Configuration Setup\_V2.x.x.exe” file.  
(This file must first be downloaded.)
- 2) Click the “Next” button.

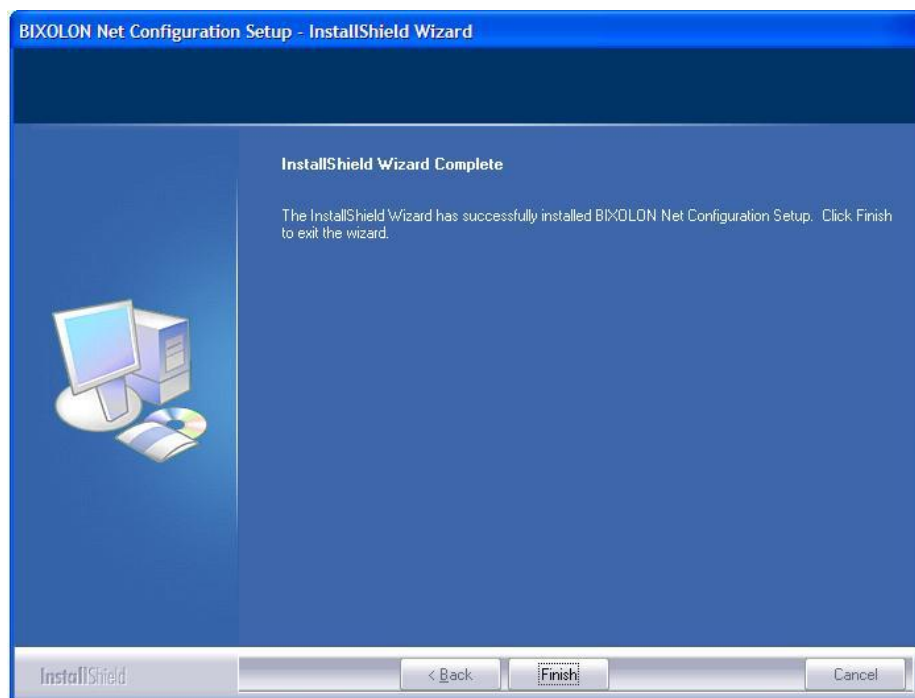


3) Click the “Next” button.

(Install to: C:\Program Files\ BIXOLON \ BIXOLON Net Configuration Setup\)



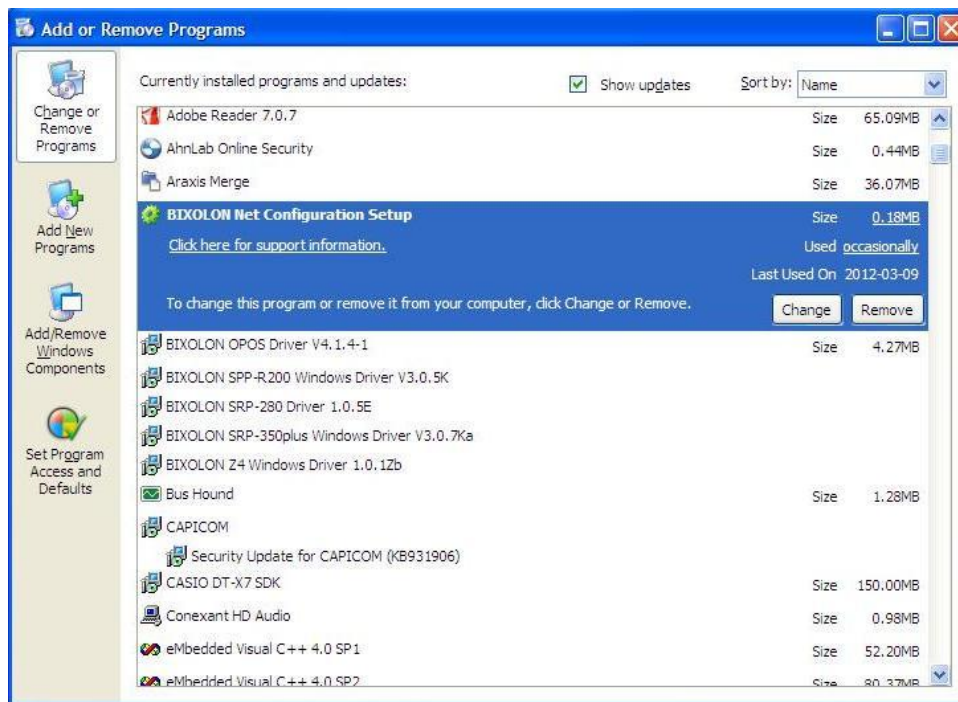
4) The following message appears upon the successful completion of installation.



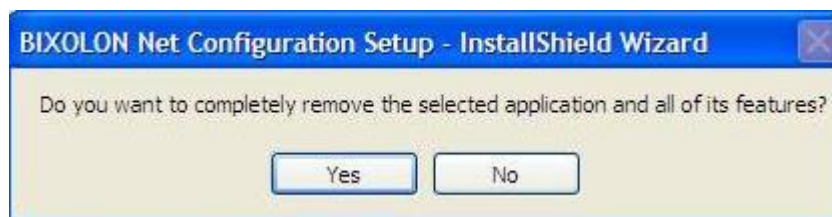
## 3-2 Uninstallation

### (1) Windows XP

- 1) Click and activate the “Add/Remove Programs” icon in the Control Panel.
- 2) Select “BIXOLON Net Configuration Setup” and click the “Change/Remove” button.

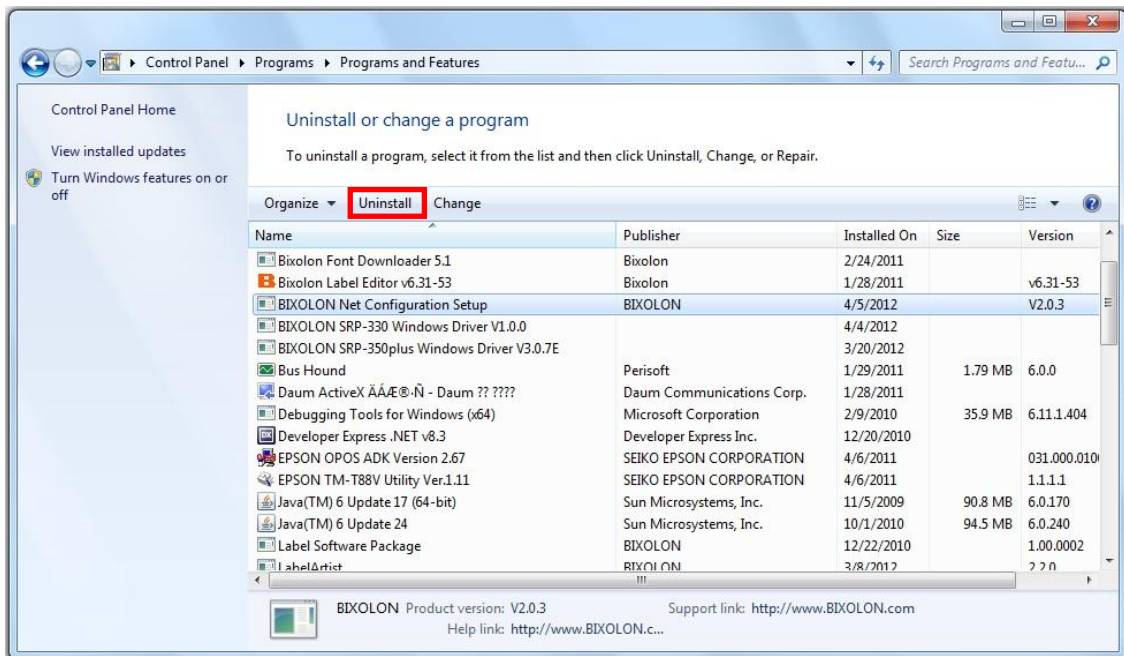


- 3) Click the “Yes” button to completely remove the application.

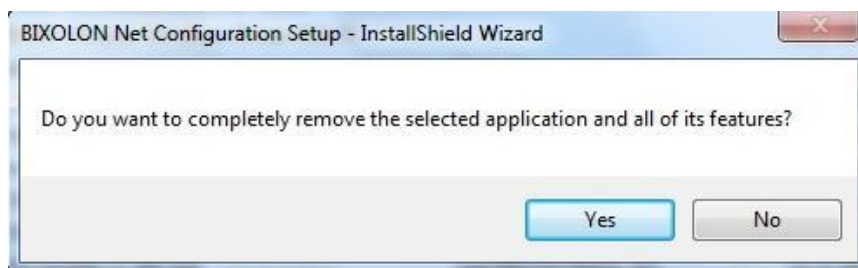


## (2) Windows 7

- 1) Click and activate the “Programs and Features” icon in the Control Panel.
- 2) Select “BIXOLON Net Configuration Setup” and click the “Uninstall” button.



- 3) Click the “Yes” button to completely remove the application.



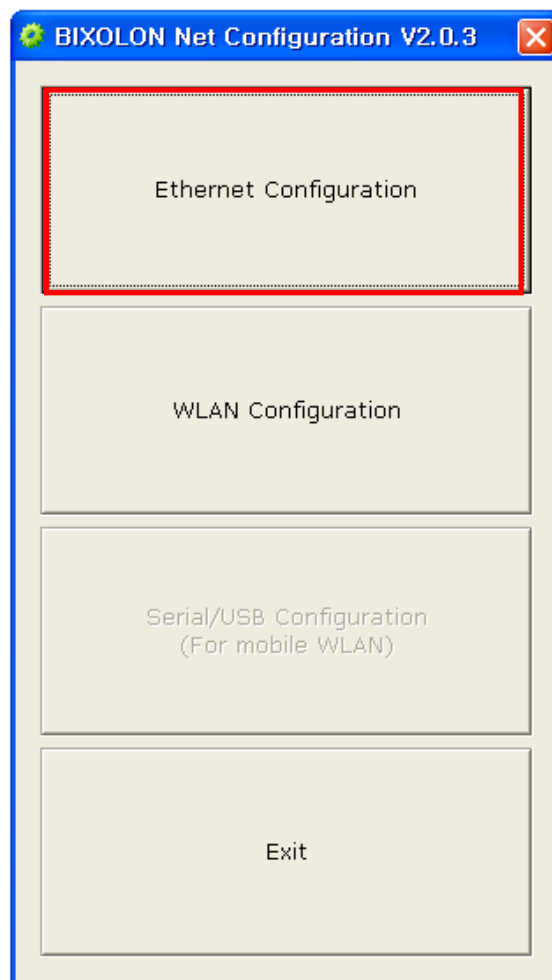
### 4. Configuration Tool

#### 4-1 Configuration Tool

Install and execute Net Configuration Setup\_V2.x.x.exe involved in CD.  
(Start>> BIXOLON >> Net Configuration.exe)

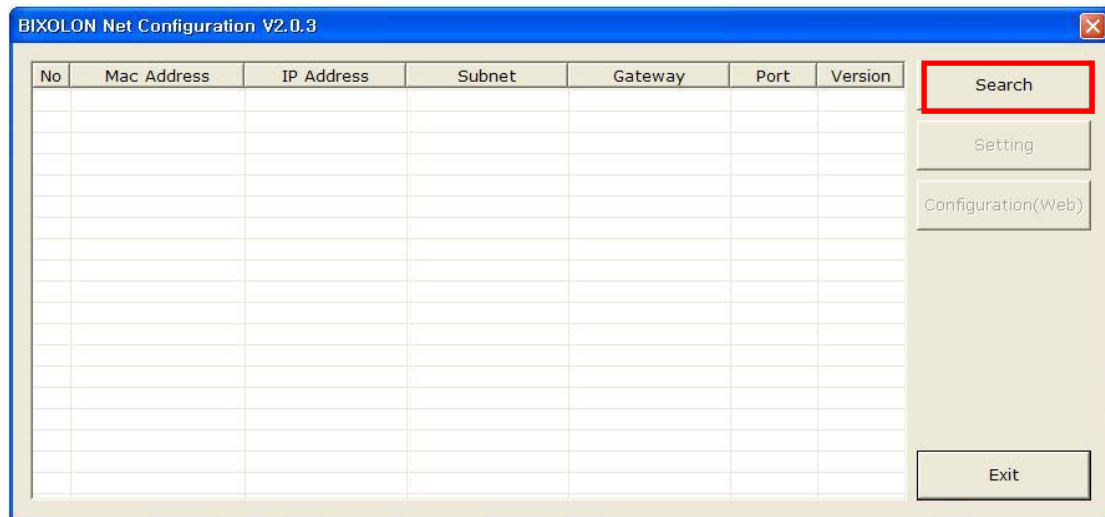
Click the Ethernet Configuration button when the printer is connected to the Ethernet, or click the WLAN button when the printer is connected through WLAN.

##### 4-1-1 Ethernet Configuration





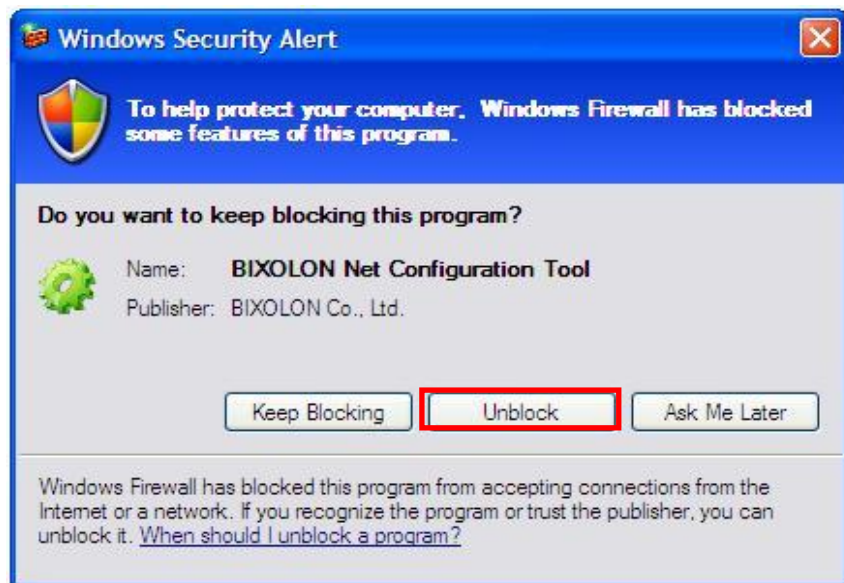
# Net Configuration Tool



When you press the Search button, the printer connected to the network will be shown in the list.

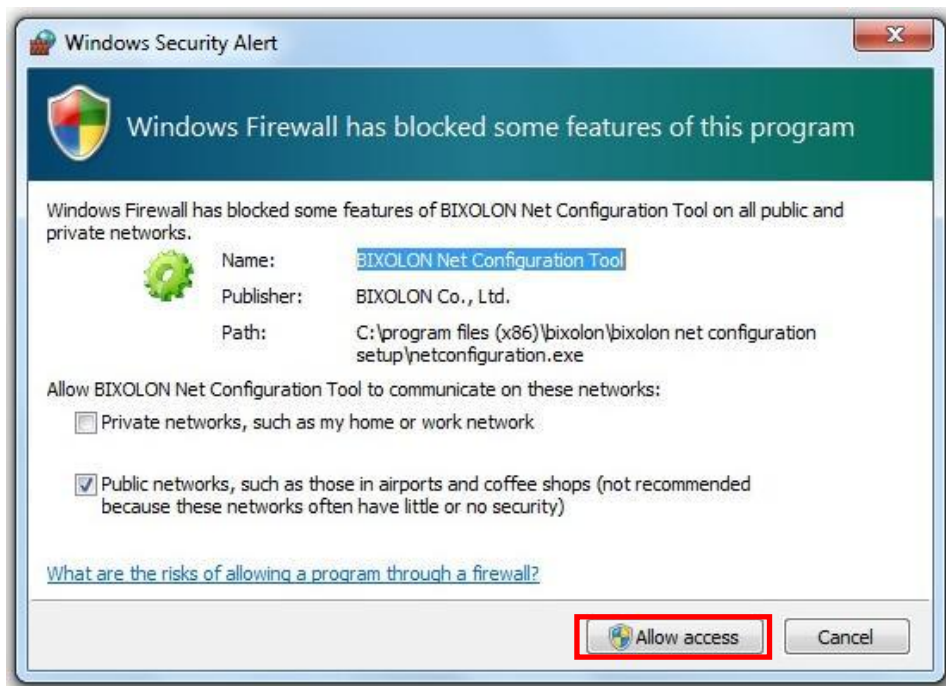
The following warning message may pop up if the firewall is installed.

## (1) Windows XP

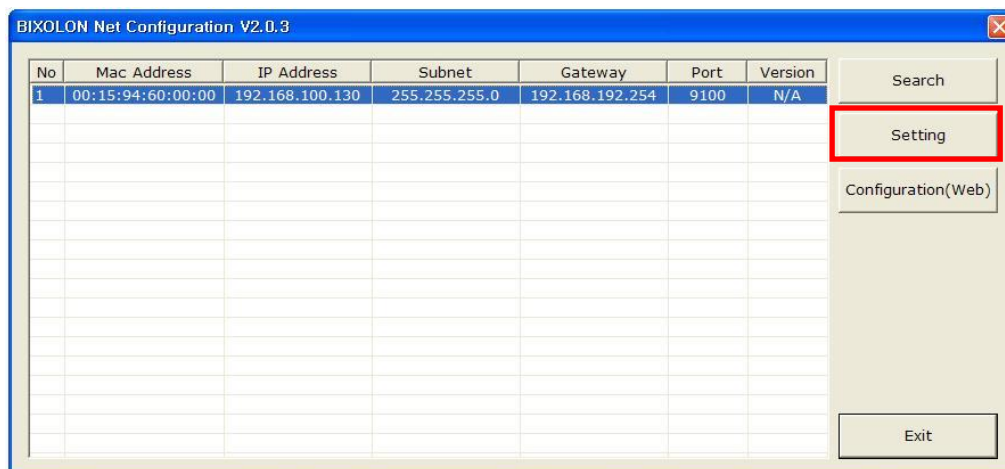


Select [Unblock], and then retry the Search operation.

## (2) Windows 7



Select [Allow access], and then retry the Search operation.



Select the printer from the list and press the [Setting] button, and then the following window for setting Ethernet settings will pop up.

## Net Configuration Tool

**Ethernet Configuration**

Network Setting

IP Address : 192 , 168 , 100 , 130

Subnet Mask : 255 , 255 , 255 , 0

Gateway : 192 , 168 , 192 , 254

Local Port : 9100 (0 ~ 32767)

Inactivity time : 0 sec (Default: 0)  
(0 ~ 3600)

☐ DHCP Mode

Device Baudrate : 19200

Firmware Version : N/A

Save Cancel

Enter the proper IP Address, Subnet Mask, and Gateway for the currently used network, and then press the Save button to save the settings.

(Device Baudrate setting, which is used for other models, is not necessary for our printer.)

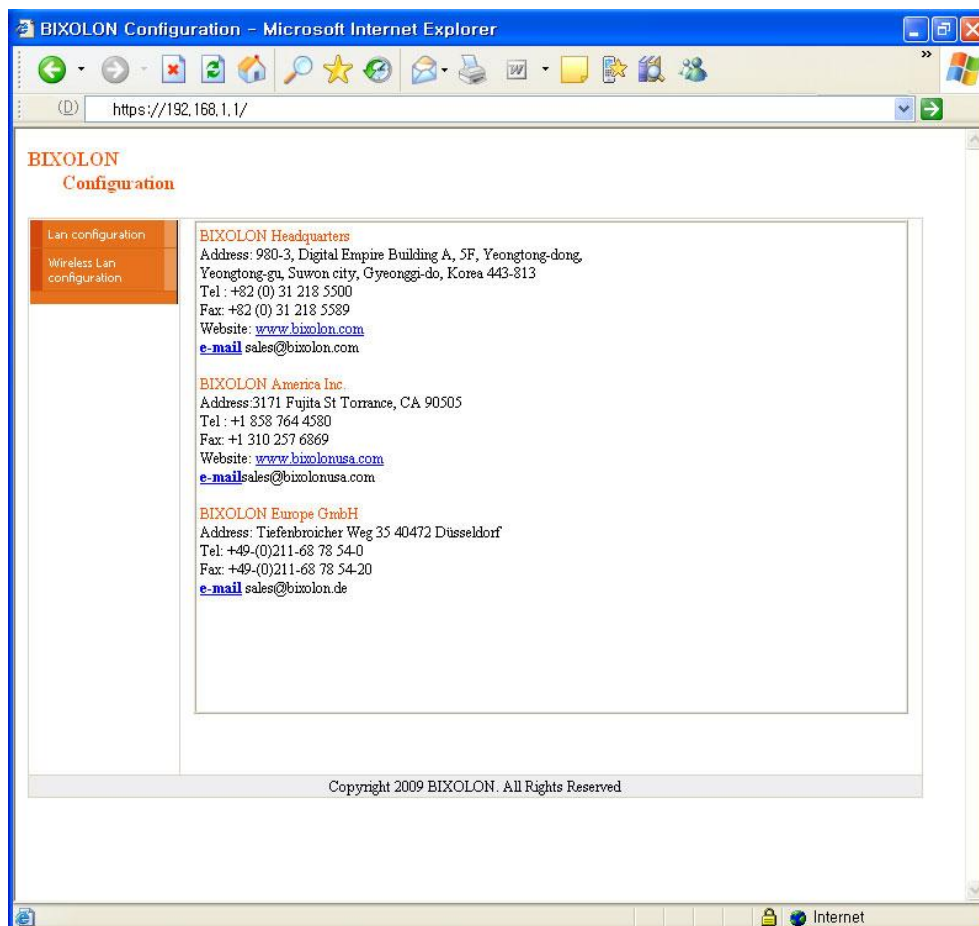
[illegible]

Select the printer from the list and press the [Configuration(Web)] button you will see the web browser for changing the Ethernet and WLAN settings as shown below.

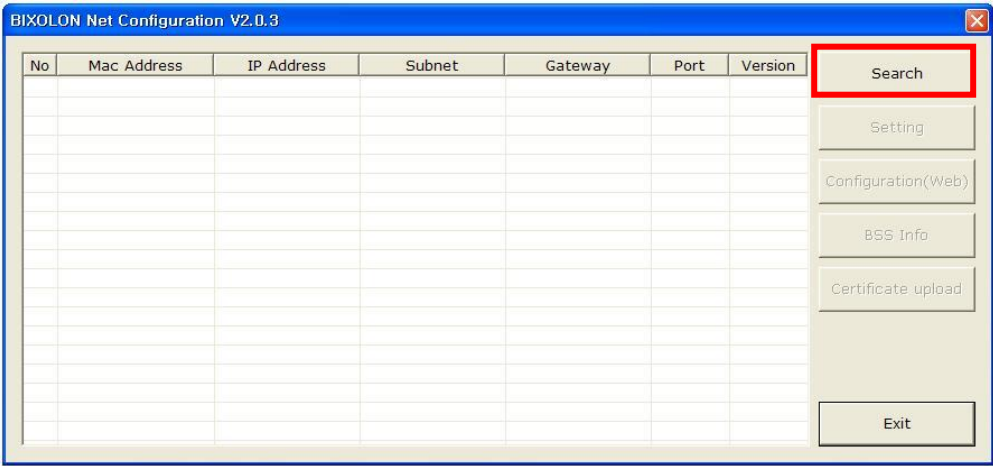
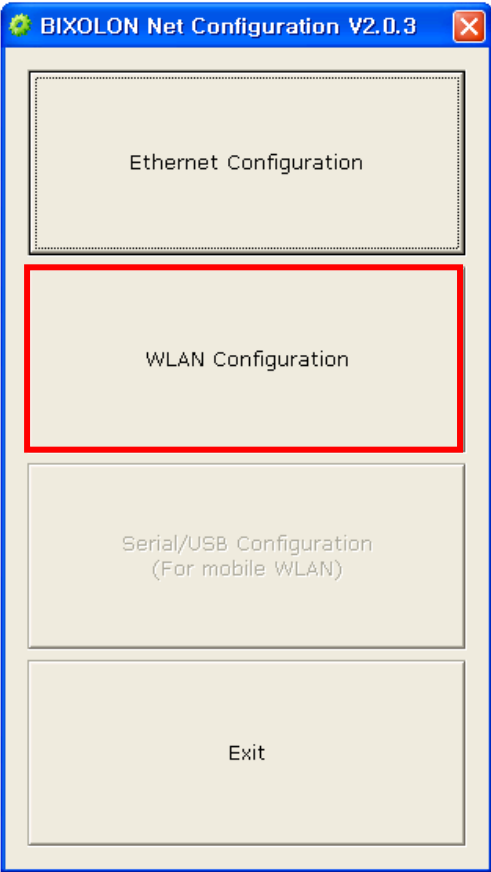
## (1) SRP-350 series / SRP-350plus series / SRP-330

Configuration	
F/W ver.	2.1
MAC	00:15:94:50:2F:C1
Source IP	<input type="text" value="192.168.100.130"/>
Subnet Mask	<input type="text" value="255.255.255.0"/>
Gateway IP	<input type="text" value="192.168.100.254"/>
Local Port	<input type="text" value="9100"/>
Inactivity Time	<input type="text" value="0"/>
DHCP mode	<input type="checkbox"/>
<input type="button" value="Apply"/>	

## (2) Label printer / SRP-F310 series

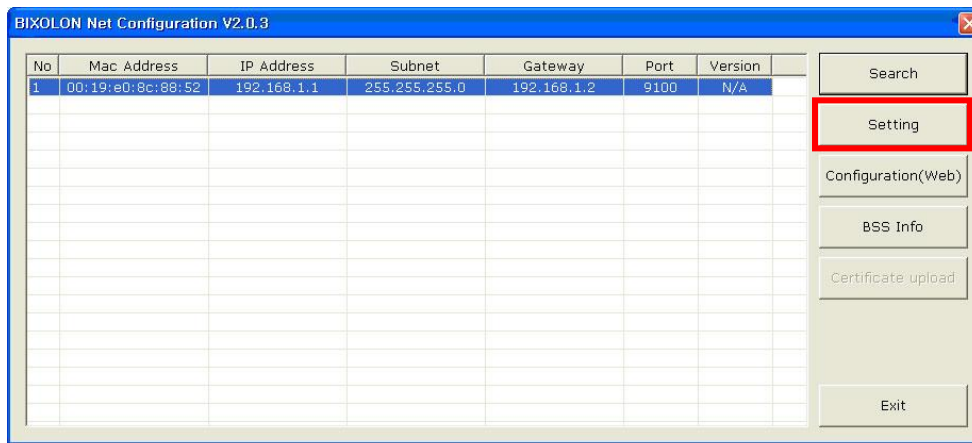


**4-1-2 WLAN Configuration**

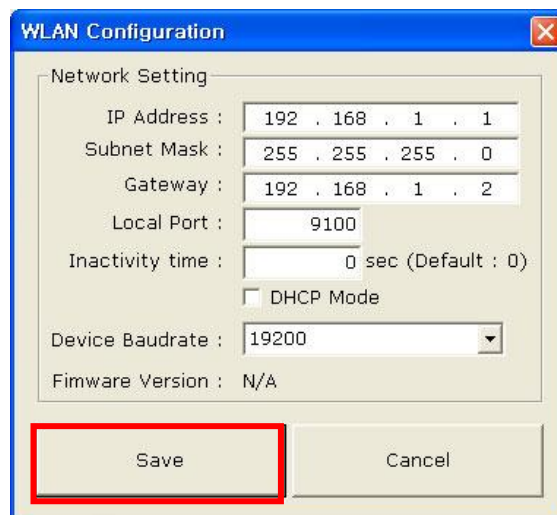


When you press the Search button, the printer connected to the network will be shown in the list.

## Net Configuration Tool



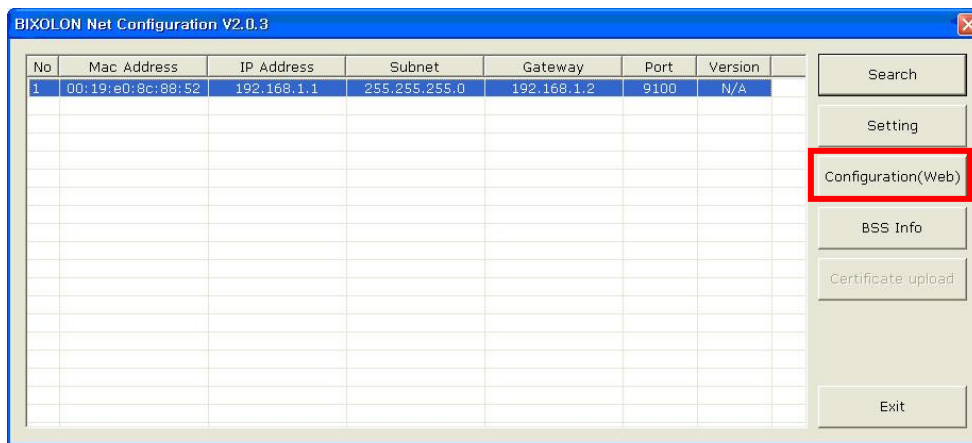
Select the printer from the list and press the [Setting] button, and then the following window for changing the WLAN settings will pop up.



Enter the proper IP Address, Subnet Mask, and Gateway of the currently used network, and then click the [Save] button to save the settings.

(Device Baudrate setting, which is used for other models, is not necessary for our printer.)

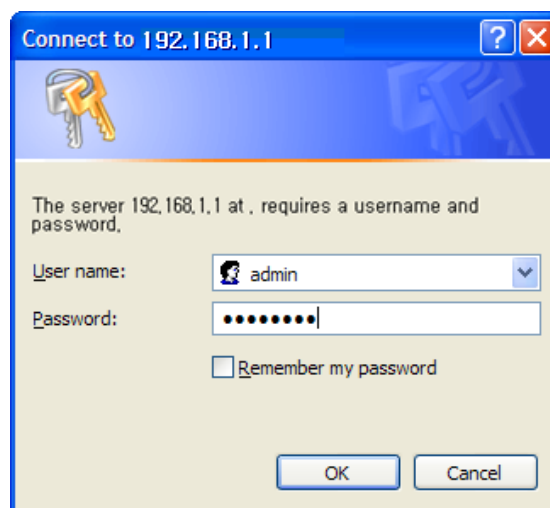
## Net Configuration Tool



Select the printer from the list and press the [Configuration(web)] button, and then the Login window will pop up.

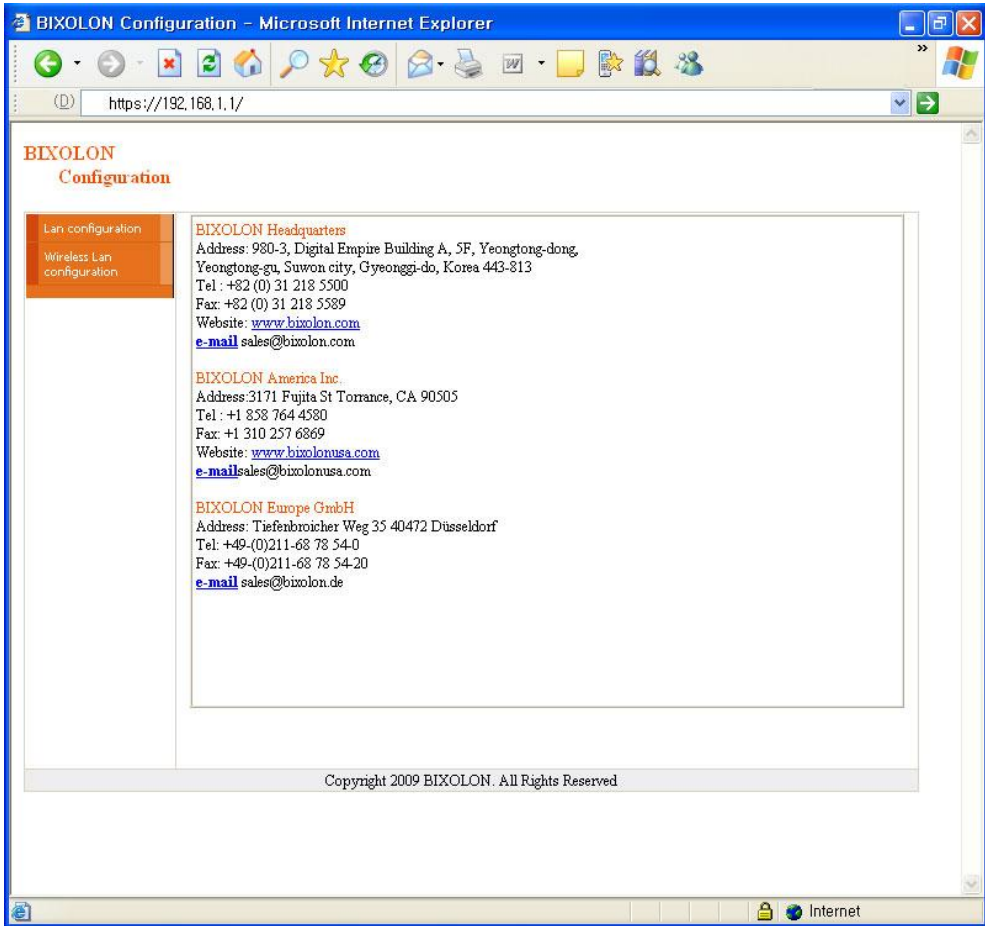
Enter the ID and Password set in the printer, and click OK.

(Default settings are ID: “admin”, Password: “password”)

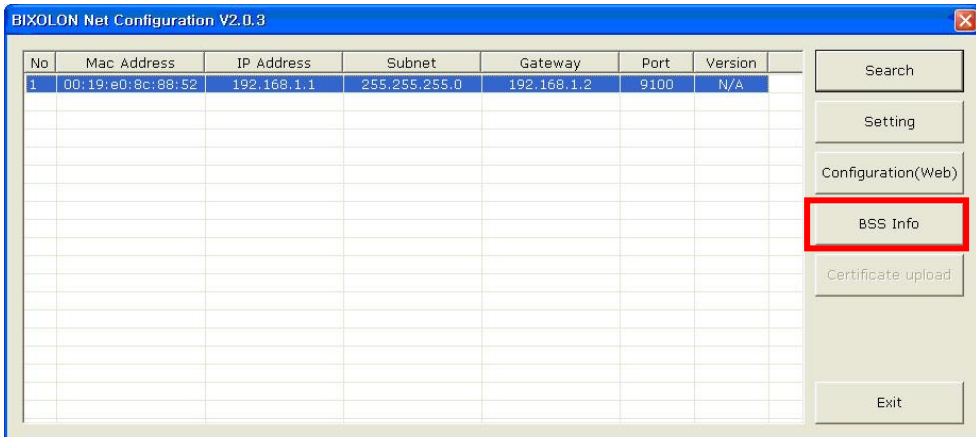


When you log in, you will see the web browser for changing the WLAN settings as shown below.

# Net Configuration Tool

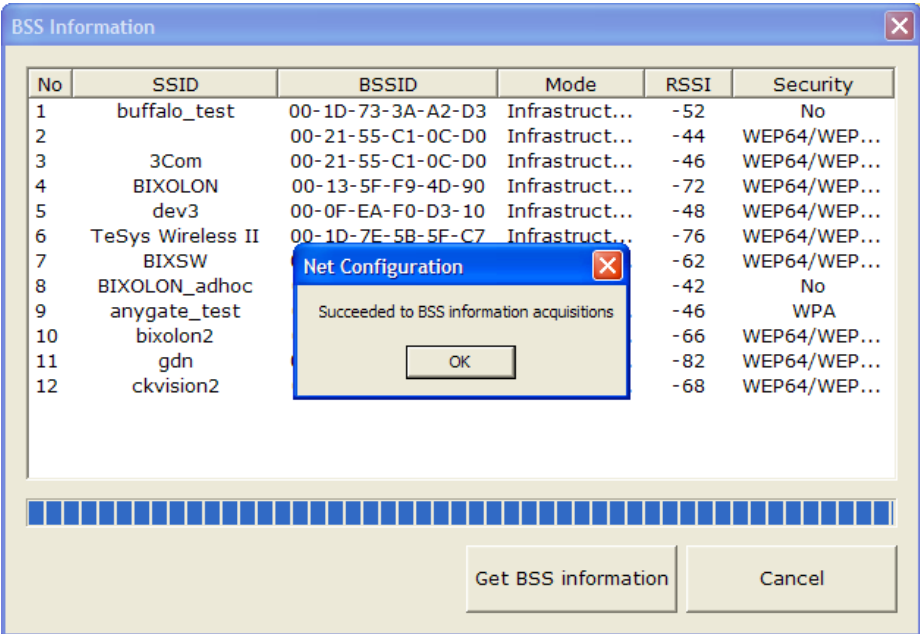


You can search for the information of the wireless network by pressing the BSS Info button.



When you press the BSS Info button, information about the SSID, BSSID, Network Model, and Encryption information of the network in close range will be shown as follows.

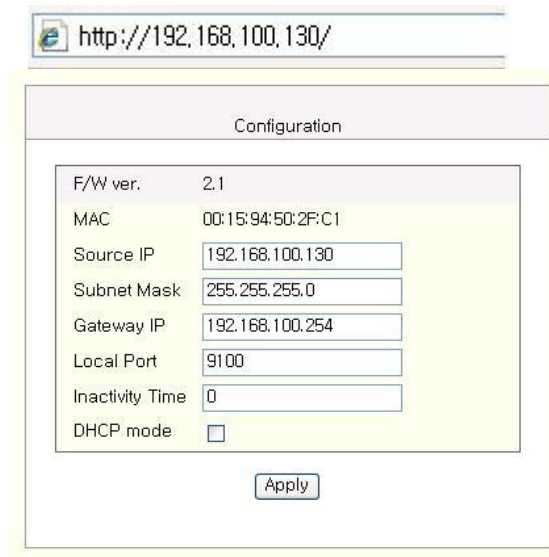




## 4-2 Web Server

### (1) SRP-350 series / SRP-350plus series / SRP-330

- 1) Execute Internet Explorer.
- 2) Enter IP address of the printer at **Address** of Internet Explorer and click **go**.



The screenshot shows the Internet Explorer address bar with the URL `http://192.168.100.130/`. Below it is the 'Configuration' window of the Net Configuration Tool. The window has a title bar 'Configuration' and a yellow background. It contains the following fields:

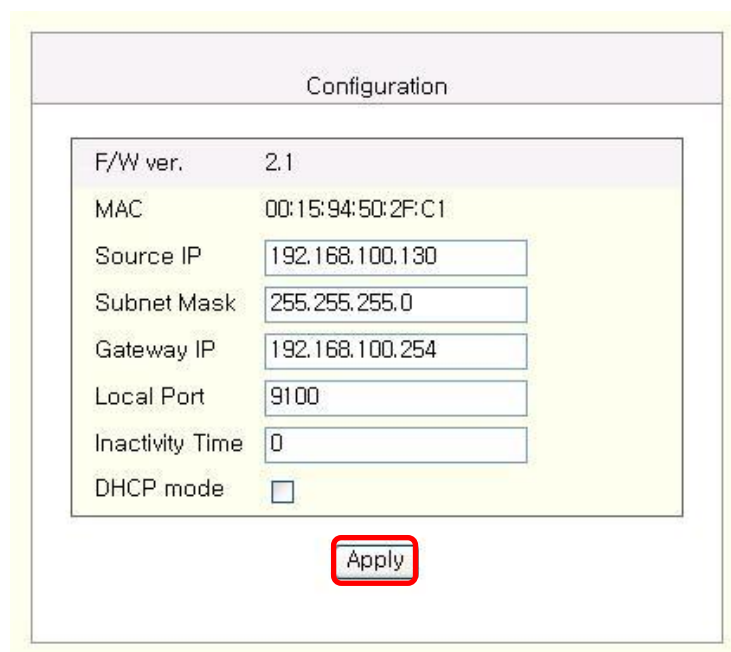
F/W ver.	2.1
MAC	00:15:94:50:2F:C1
Source IP	192.168.100.130
Subnet Mask	255.255.255.0
Gateway IP	192.168.100.254
Local Port	9100
Inactivity Time	0
DHCP mode	<input type="checkbox"/>

At the bottom of the window is an 'Apply' button.

#### [Note]

- If you are not aware of IP address, check IP address by pushing Function key.
- Ask Network administrator IP Address and its related information.

- 3) When **Configuration** Window appears, enter new **Network Setting**.

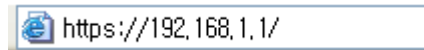


This screenshot shows the same 'Configuration' window as the previous one, but with the 'Apply' button highlighted by a red rectangle. The fields are identical to the previous screenshot.

### (2) Label printer / SRP-F310 series

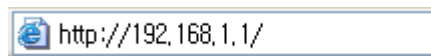
- 1) Execute Internet Explorer.
- 2) Enter IP address of the printer at **Address** of Internet Explorer and click **go**.

When SSL of the web-server is enabled,



- \* a security warning window will pop when you try to connect with https.  
Accept the certificate provided by the printer in the warning window and continue.

When SSL of the web-server is disabled,



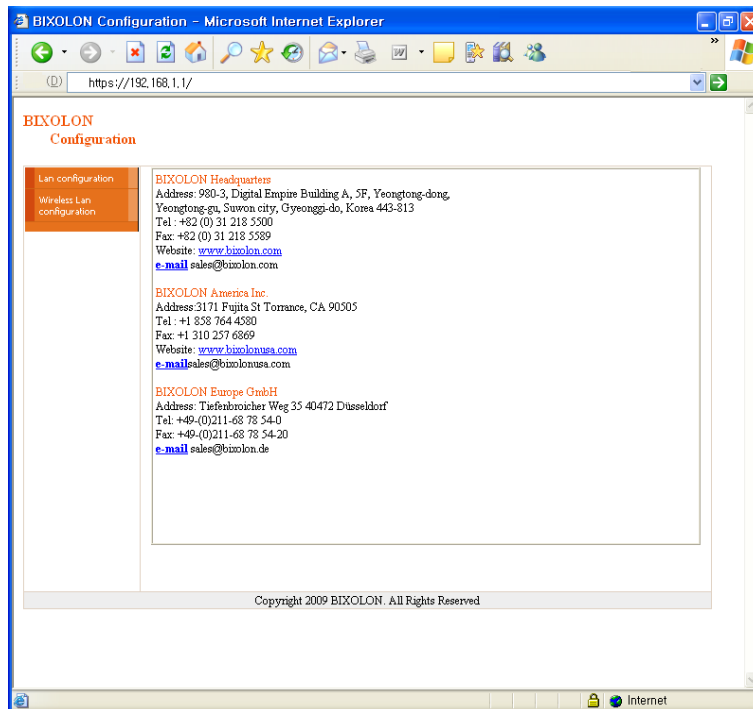
enter the IP address of the printer in the address bar, and the following login window will pop up.

Enter the ID and Password set for the printer, and then click [OK]  
(Default setting values are ID: "admin", Password: "password".)



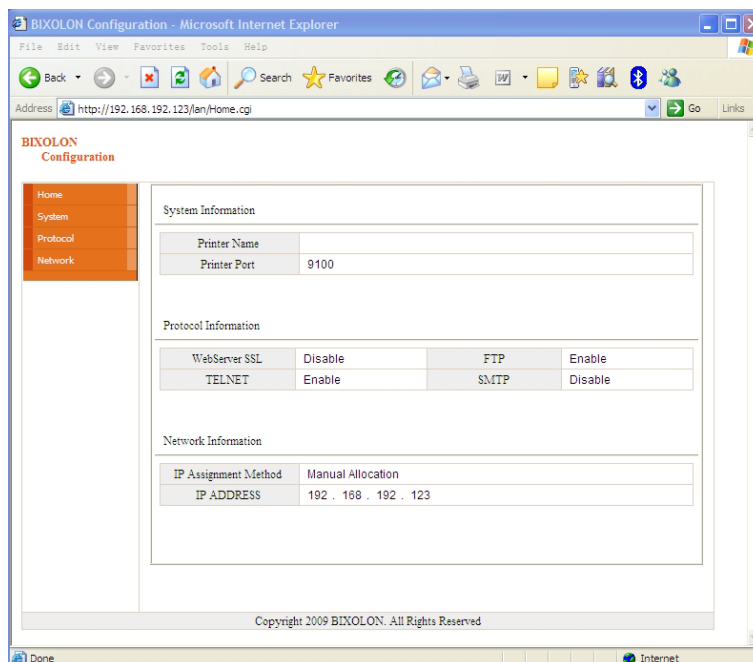
# Net Configuration Tool

When the ID and Password match the ones registered in the printer, the following window will be opened.



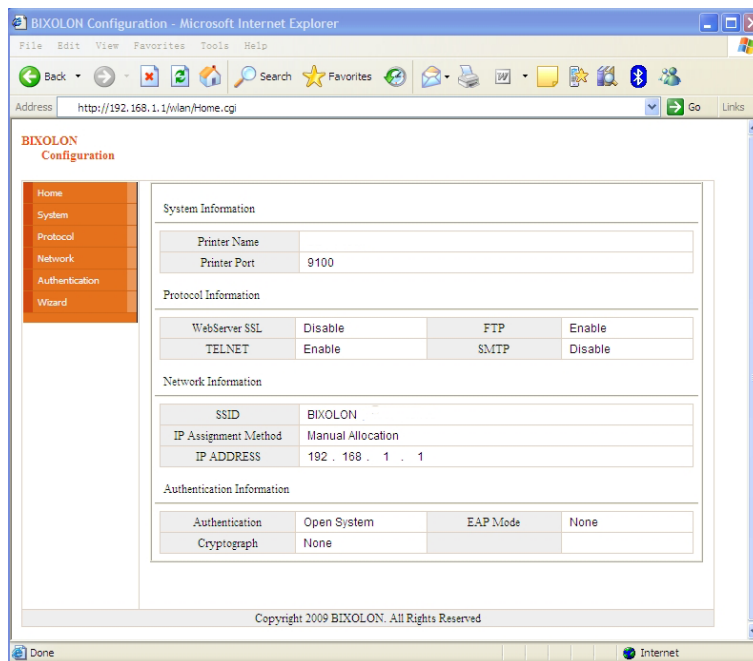
Both LAN and WLAN can be configured from this window.

## LAN Configuration Selection



Settings related to Home, System, Protocol, and Network (LAN) can be configured in this window.

## Wireless LAN selection



Home, System, Protocol, Network (WLAN), and Authentication can be configured from this window, and the wizard mode is also provided for easier step by step configuration.

### **[Note]**

More information about options, please refer to 'Ethernet Interface Manual' or 'Network User Manual'.